

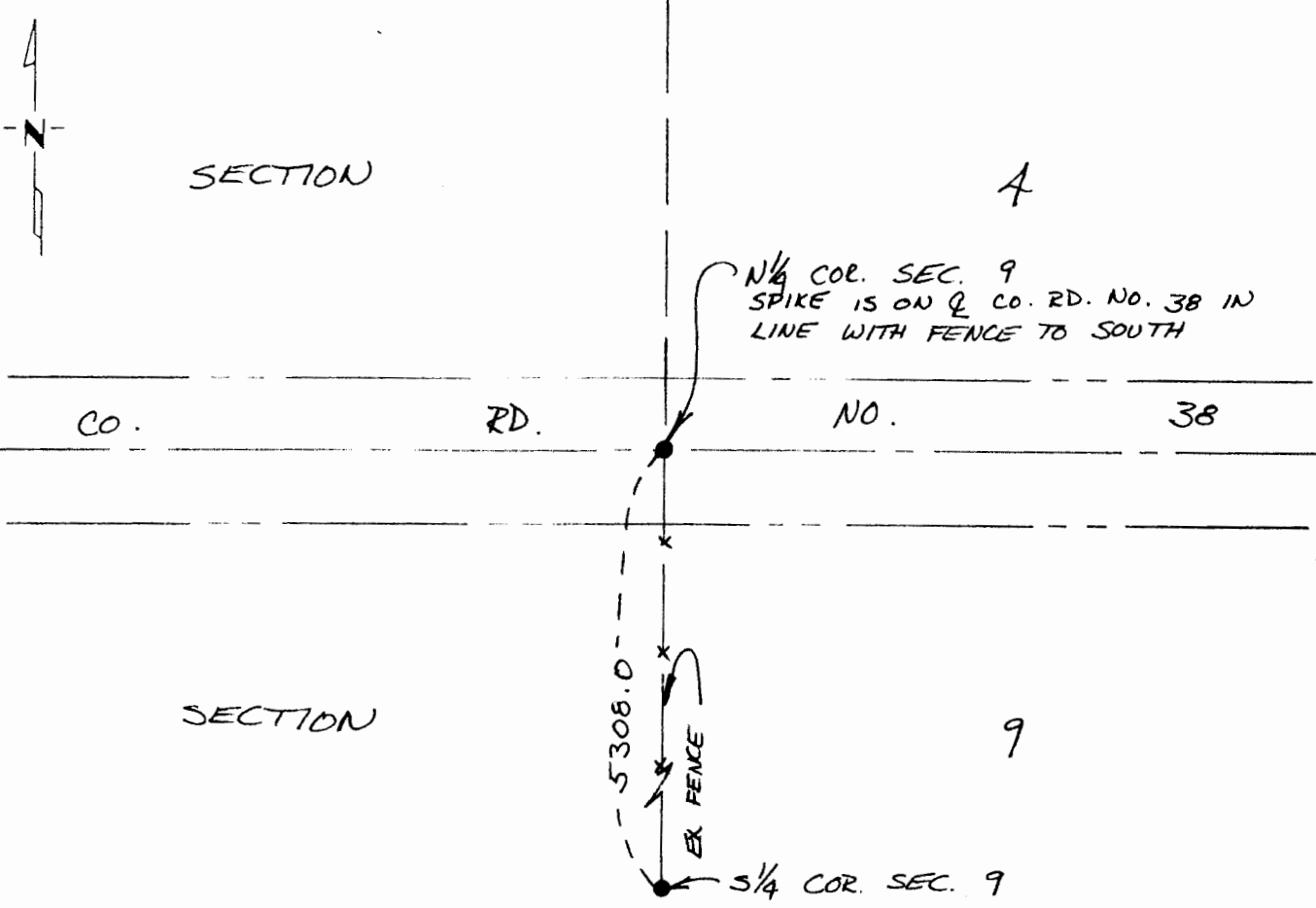
# CERTIFICATE OF LOCATION OF GOVERNMENT CORNER

NORTH QUARTER Corner of Section 9, Township 107N, Range 40W, 5 P.M.  
STATE OF MINNESOTA, County of MURRAY

At the corner location shown on the sketch:

- On 9/27/88 found a R.R. SPIKE IN PLACE 1/2" BELOW SURFACE  
DATE
- left monument as found,  lowered monument,  removed monument (explain)
- On \_\_\_\_\_ placed a \_\_\_\_\_  
DATE

### SKETCH OF REFERENCE TIES



Statement of evidence relative to this corner location is on back of page.

I hereby certify that this document and the data contained herein was prepared by me or under my direct supervision.

C. Allen Bergquist 10-30-90  
SIGNATURE DATE

Registration No. 6700  
 Land Surveyor,  Professional Engineer  
 County Surveyor,  County Engineer

OFFICE OF THE REGISTER OF DEEDS  
County of \_\_\_\_\_

I hereby certify that this document was filed in the Reg. of Deeds office at \_\_\_\_\_ .M. on the \_\_\_\_\_ day of NOV 6 1990 A.D., 19 \_\_\_\_\_

County Recorder James V. Johnson  
By \_\_\_\_\_, Deputy

DOCUMENT NO. \_\_\_\_\_

SIOUX ENGINEERING, INCORPORATED ..... WINDOM, MINNESOTA SURVEY NO. MU 3015